

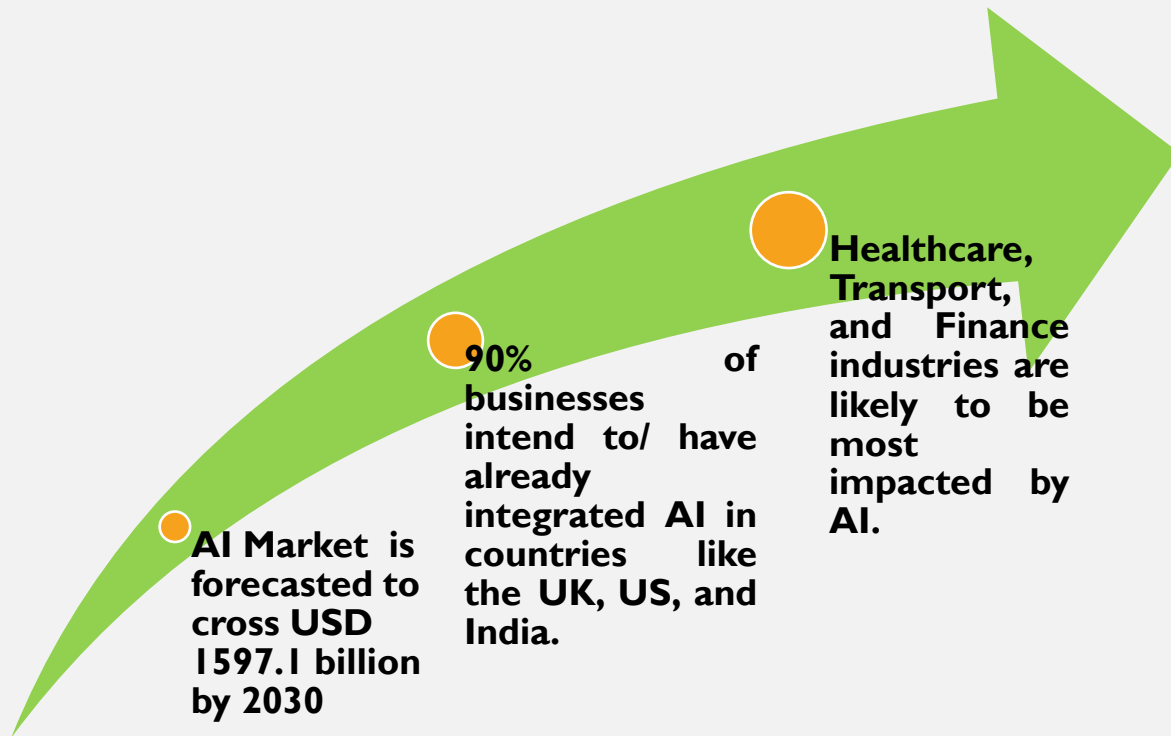
Evolution of AI, its impact and policy implications

SANKHYA (संख्या)

“There cannot be a good plan for economic progress without adequate data and there cannot be adequate data without a good plan for collecting them...”

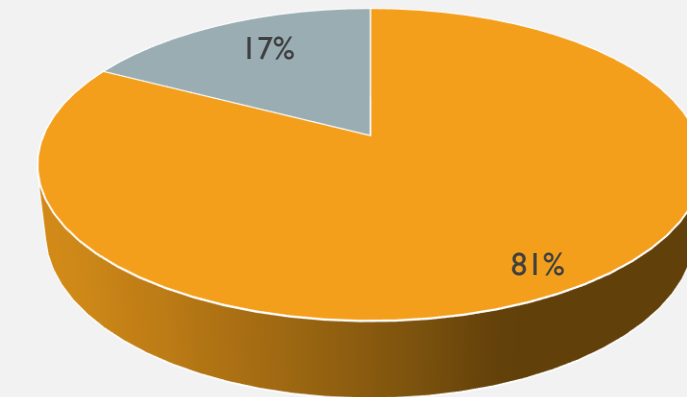
P.C Mahalanobis, Member, First Planning Commission of India & Scientist

FROM HUMAN INTELLIGENCE TO ARTIFICIAL INTELLIGENCE



IMPACT OF AI IN THE COMING YEARS

Percentage of companies with business strategies



■ Have a strategy ■ Don't have but intend to

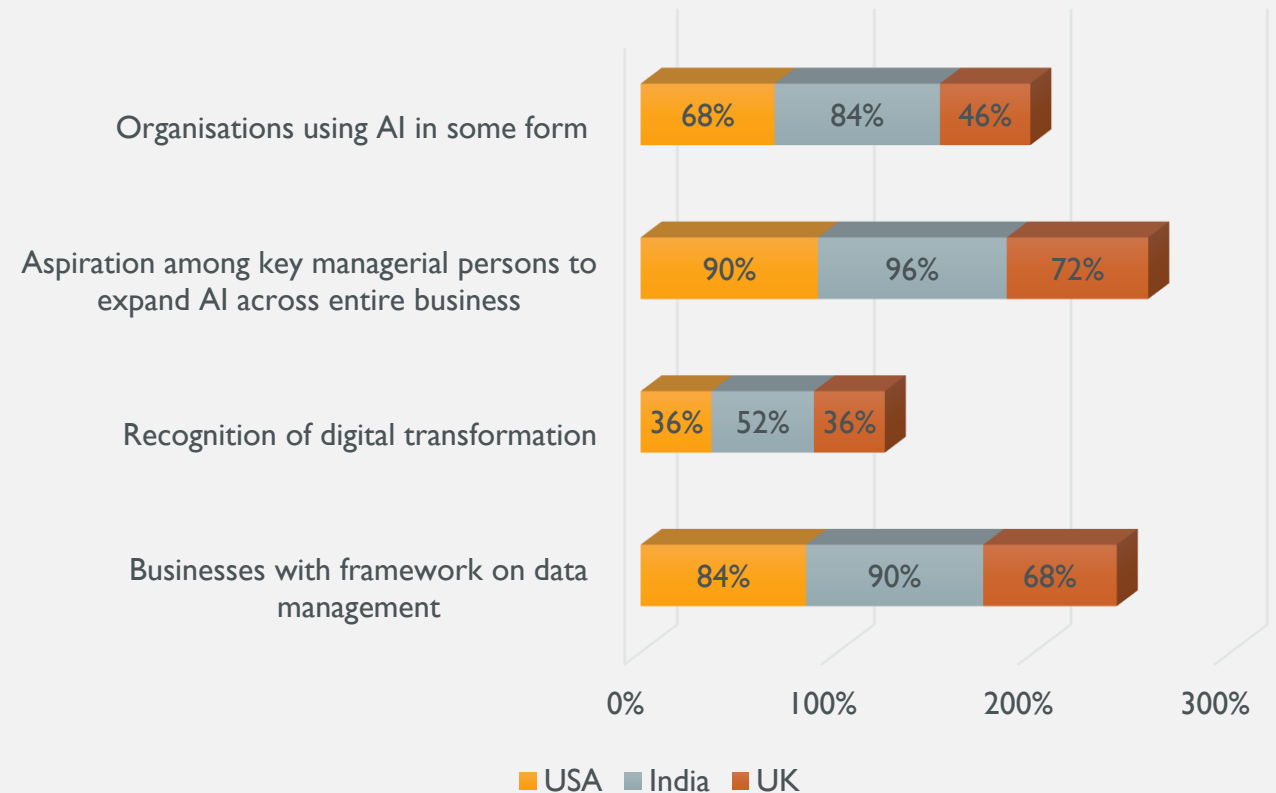
Source: Peak, State of AI Report, 2022

INDIAN BUSINESSES EMERGE AS DIGITAL LEADERS IN TERMS OF ADOPTION OF AI

India Leads Digital Readiness Chart With Respect To AI Adoption



Comparison of AI implementation strategies between US, UK and India



Source: Peak, State of AI Report, 2022

POLICY IMPLICATIONS

International Cooperation

- Countries shall have to coordinate and develop policies, regulations and rules for greater international alignment of national data regulations to prevent misuse of AI.

Upgradation of existing education system

- Since around 0.7 million jobs are likely to be replaced by automation, the future workforce should be equipped with a higher degree of digitization of skills and tasks. Therefore, educational and vocational courses will have to be revamped.

Demand for Labour

- There shall be cross-border movement of labour with large number of talented workforce in the field of data moving from developing countries such as India to developed countries due to inadequate supply of skilled labour in such nations. Measures must be implemented to prevent brain drain.

Independent Accountability Mechanism

- Every government department and organisation using AI should have an independent technology officer to oversee and audit the use and misuse of data similar to independent auditors.

AI in warfare

- Use of Autonomous Weapon Systems during war would ensure minimal human involvement on the field but also brings up various policy related issues like how their use shall be regulated, on whom the criminal liability be fixed in case of any mishap

WANT TO SUBMIT IDEAS FOR
SANKHYA OR GIVE YOUR
VIEWS ON OUR PAST
EDITIONS?

*Share your views, analysis, ideas and
questions*

appointments@bridgethinktank.com



BRIDGE
— THINK TANK —

Sankhya* is an initiative of Bridge Policy Think Tank to create interface snapshots in statistics and policy analysis while promoting critical thinking and analysis.

* Sankhya means numbers and is also a school of rationalist Indian philosophy. According to Sankhya philosophy reliable knowledge comes from only three pramanas (proofs)- pratyakṣa ('perception'), anumāṇa ('inference') and śabda (āptavacana, meaning, 'word/testimony of reliable sources').